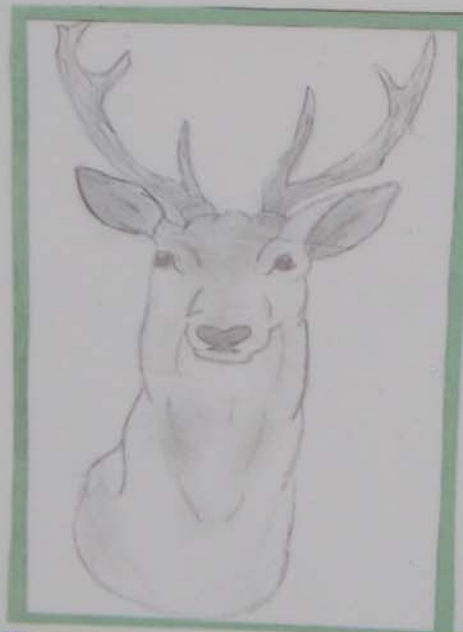


# White Tailed Deer

Drawing and research by Ruth Venegas  
and Ellie Lucier, 8th grade Self & Com-  
munity 2011-12



- Female deer weigh 110 pounds and males weigh 130 pounds.
- Their color is red in the summer and grey in the winter.
- 1 in 10,000 females can grow antlers
- Natural predators of White Tailed Deer are wolves and cougars.
- Deer communicate using scent, markings and noises.
- They get their name from the white underside of the tail that only sticks up when they are disturbed.



This sign was funded, in part, by the Michigan Department of Natural Resources Forest Stewardship Program and the USDA Forest Service, and sponsored by the Lake Superior Stewardship Initiative.





# Blue Jay

- ♦ Are year-round residents.
- ♦ Can mimic cats, hawks, screech owls, and crows.
- ♦ Say, "Jay, Jay".
- ♦ If it's white tipped tail feathers are fanned out it means that it is going to land.
- ♦ They fly above the tree tops during long trips and below tree tops during short trips.
- ♦ Live all-over Michigan.
- ♦ Omnivores

## Interesting Fact:

Can plant many oak trees because they store acorns underground and later forget where they put them.

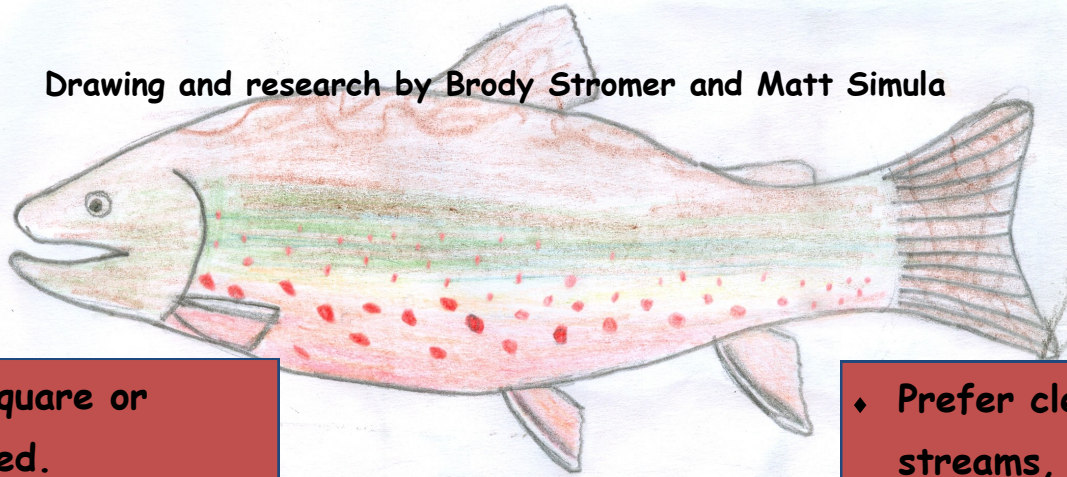
Drawing and research by Lily Johnson and Tonia Levanen.



This sign was funded, in part, by the Michigan Department of Natural Resources Forest Stewardship Program and the USDA Forest Service, and sponsored by the Lake Superior Stewardship Initiative.

# Brook Trout

Drawing and research by Brody Stromer and Matt Simula



- ♦ The tail is square or slightly forked.
- ♦ Average size is 8-10 in.
- ♦ Eat small insects, small fish, worms and leaches.
- ♦ Habitat includes small lakes or streams with a sandy or gravel bottom.

- ♦ Prefer clear, cool streams, with water temperatures 50-60 degrees.

## Interesting Fact:

Part of the Salmon family and can live 4-7 years.

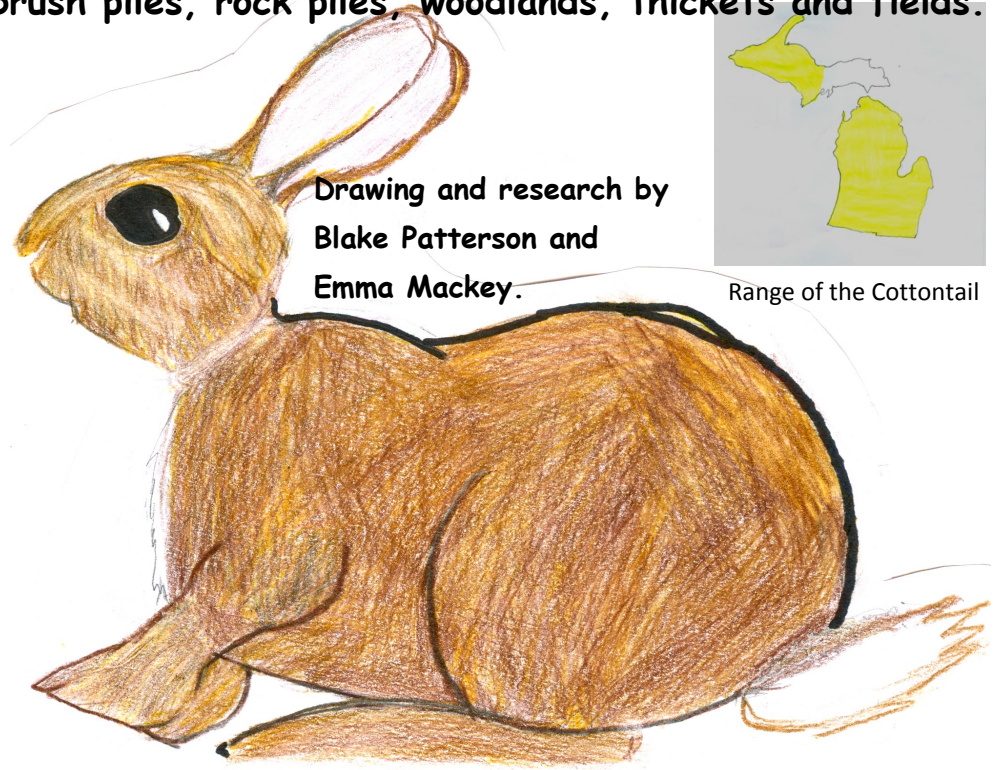


# Eastern Cottontail Rabbit

- Make their burrow lined with soft plant material and fur from mother's chest
- Zig-zag to get away from predators
- Rabbit tracks always show the hind feet first.
- Habitat includes suburban lawns, brush piles, rock piles, woodlands, thickets and fields.

## Interesting Fact:

- Will thump foot to communicate with other rabbits





# Cottontail Rabbit



Drawing and research by  
Abby Simonson and  
Rhyan Smith

- Cottontail's fur stays brown in the winter.
- Usually has a small white spot on the forehead between the ears.
- Is a herbivore that eats grass, dandelions, and other green plants in the spring. In the summer they eat raspberries, roses and saplings. During winter, they eat bark and other woody plants.

## Interesting Fact:

Will make a high pitched sound when caught by a predator such as a fox.



# MINK

Drawing and research by Murphy Mallow and  
Reece Anderson.



- Belong to the skunk and weasel family.
- Grow 14-20 inches long.
- Weigh 2-4 pounds.
- Live 5-10 years.
- Fur is dark brown to blonde, often with luster.
- Habitat is along rivers, lakes, streams, wetlands, farms and forests.
- Male's territory can be as large as 40 acres.

## Interesting Fact:

Can swim a distance of 100 feet underwater before surfacing and can dive 15 ft. under the water.





# Mountain Ash

- Member of the rose family.
- Has compound leaves.
- Is NOT related to other Ash species.
- Produces white flowers and red to orange berries.
- Berries are long lasting.
- Each bundle of flowers can contain up to 250 flowers per cluster.
- The Irish have used the berries to dye clothing and to make jellies.

## Interesting Fact:

In Tasmania, the Mountain Ash is the world's tallest flowering plant, up to 150 meters tall.

Drawing and research by Savannah Stroud



# Northern Flying Squirrel

## Interesting Fact:

Have flaps of skin on their arms so they can glide in the air.

Research and drawing by Zac Zobro and Zach Neher.



- Signs of one include food that has mysteriously disappeared from bird feeders overnight.
- Habitat includes urban and suburban yards, mixed woods, coniferous and deciduous forests.
- Nocturnal and active year-round.

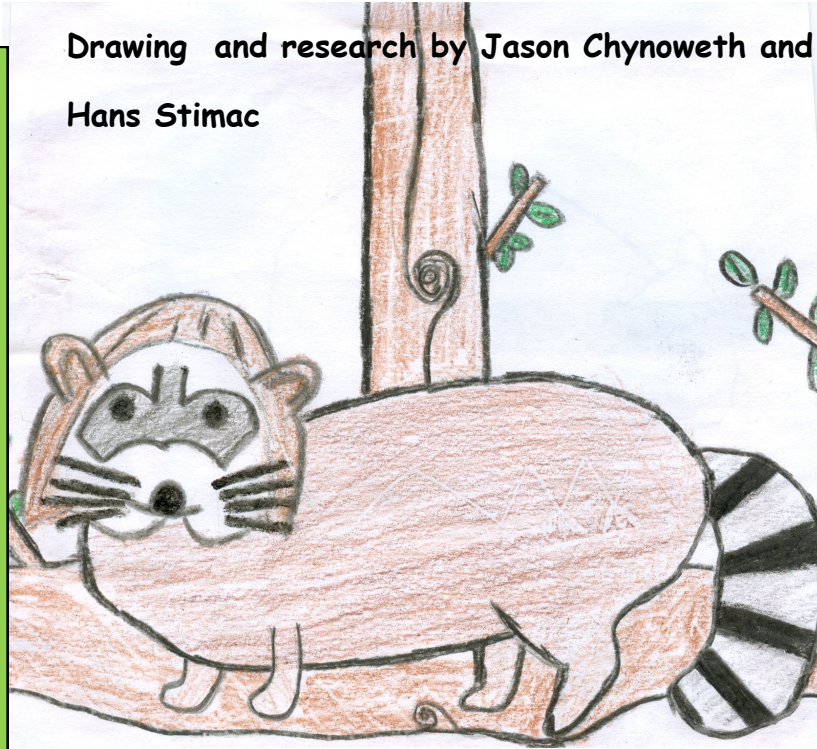
- Eat seeds, nuts, baby birds, baby mice and fungi.
- Can make nest in trees and in attics of homes or out-buildings.





# Northern Raccoon

Drawing and research by Jason Chynoweth and  
Hans Stimac



- ♦ Weighs between 12 -35 pounds.
- ♦ Can live 6-10 years.
- ♦ Nocturnal
- ♦ Eats fish, nuts, fruit and small mammals.
- ♦ Do not hibernate but do have long sleeps in the winter.
- ♦ A very distinctive black mask on face and dark rings on it's tail.

- ♦ Habitat includes wetlands, prairies, woodlands, rural and urban areas.
- ♦ Can make loud snarl and hiss sounds.

## Interesting Fact:

Raccoons can climb trees very quickly and can come down the tree either tail first or head first.



Research by Catherine Alkuino &  
drawing by Savannah Stroud.

# Northern Red Oak



- ◇ Most important lumber species in the Red Oak group.
- ◇ Scientific name, *Quercus rubra*, means 'oak red'.
- ◇ Can grow up to 70 feet tall.

## Interesting Fact:

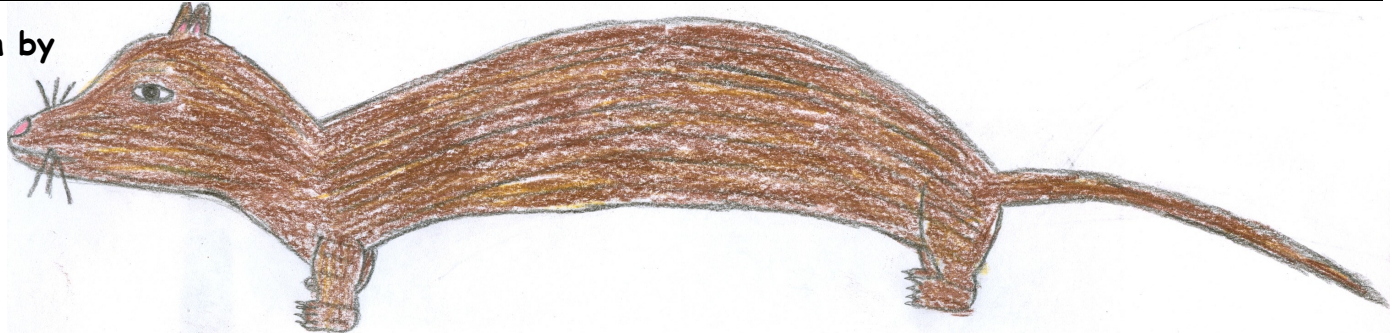
Some of the plants that live under a Red Oak include Beaked Hazel and Poison Ivy (which does not live in our area).

This sign was funded, in part, by the Michigan Department of Natural Resources Forest Stewardship Program and the USDA Forest Service, and sponsored by the Lake Superior Stewardship Initiative.



# Short-tailed Weasel

Drawing and research by  
George Mendivil and  
Anthony Kopke.



- Size can reach 10 inches with a tail of 2-4 inches.
- Colors range from dark brown to white.
- Carnivores
- Native to Michigan and live 3-7 years.
- Habitat includes mixed forests, wetlands and prairies.

## Interesting Fact:

It has been said that weasels suck the blood out of their prey. They do not, but their habit of licking blood from the wounds and fur of animals they kill may have led to this belief.



# Tag Alder

Research by Mackenzie Wuori and drawing by Savannah Stroud



- Bark is dark, reddish-brown and smooth
- Leaves are long, dull, dark green above and paler green on the bottom of the plant
- Flowers are tiny without petals
- Habitat includes wet, open sites on shores and in depressions and wetlands.
- Native
- Grows to the size of a shrub or small tree usually 5-25 feet tall.

